



GMT MONTHLY MEMBERSHIP PROGRESS REPORT

Results as of: 9/30/2023

Multiple District 202

LOCATION: NEW ZEALAND

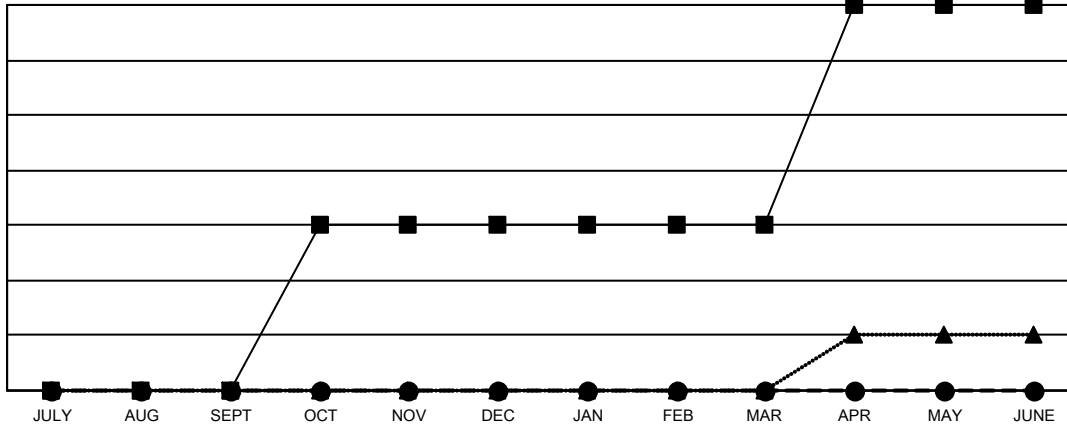
GMT: OPEN

GMT CA 7

Clubs			
RESULTS FOR 2023-2024			
QUARTER	NEW CLUB GOAL	NEW CLUBS	DROPPED CLUBS
JULY/AUG/SEPT	0	0	3
OCT/NOV/DEC	3	0	0
JAN/FEB/MAR	0	0	0
APR/MAY/JUNE	4	0	0

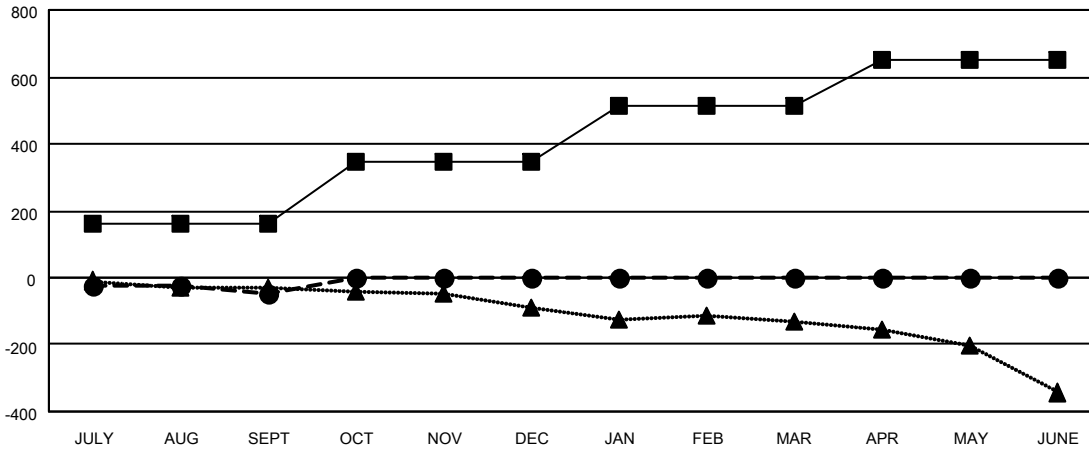
Members			
RESULTS FOR 2023-2024			
QUARTER	MEMBER GROWTH NET GOAL	MEMBER GROWTH ACTUAL	DROPPED MEMBERS ACTUAL (including transfers)
JULY/AUG/SEPT	162	183	200
OCT/NOV/DEC	182	0	0
JAN/FEB/MAR	168	0	0
APR/MAY/JUNE	139	0	0

GOALS AND ACTUAL NEW CLUBS CUMULATIVE



- - CURRENT YEAR GOALS FOR NEW CLUBS
- - CURRENT YEAR ACTUAL NEW CLUBS
- ▲ - LAST YEAR ACTUAL NEW CLUBS

GOALS AND ACTUAL MEMBERS CUMULATIVE



- - MEMBER GROWTH NET GOAL
- - MEMBER GROWTH ACTUAL
- ▲ - LAST YEAR MEMBERSHIP ACTUAL

DROPPED CLUBS: 3	
DROPPED MEMBERS	
DECEASED	30
CLUB CANCELLED	0
OTHER	170
TOTAL	200

91 CLUBS OF 299 ADDED 1 OR MORE NEW MEMBERS
CLICK HERE FOR CUMULATIVE MEMBERSHIP DATA

GENDER DISTRIBUTION	
MALE	5,252 (67.20%)
FEMALE	2,564 (32.80%)
TOTAL FAMILY UNIT MEMBERS	743
FAMILY MEMBERS PAYING HALF DUES	374